

Microsun[®]

Control Module Assembly Instructions

Caution: This device is a replacement component for use only in lamps purchased originally from Microsun and wired with the Microsun Control Module assembly. Do NOT attempt to use this device with any other lamp or fixture.



WARNING: Read entire installation instructions before beginning installation and save these instructions.

All wiring must be in accordance with national and local electrical codes. If you are unfamiliar with wiring, you should use a qualified electrician for this replacement procedure.



Warning: To Reduce The Risk Of Electrical Shock Or Injury To Persons, Observe The Following Guide Lines

1. Before starting unplug lamp cord from the electrical socket.
2. Allow a few minutes for the light bulb to cool before removing it from the socket.
3. Have a clean area to work which is free from obstacles and distractions.
4. This unit is intended for indoor use only.
5. If you are not comfortable with any aspect of installing your Control Module, consult a professional electrician.

Tools Required: Safety Glasses, Two Wire Nuts, Wire Cutters, Wire Strippers, 5/64 Allen Wrench

Material List: Control Module



1-Control Module

1

Unpack and inspect the Control Module carefully to be sure no damage has occurred during shipment.

Lamp Shade



Bulbs



Harp

2

Remove your lamp shade, harp and all three bulbs.

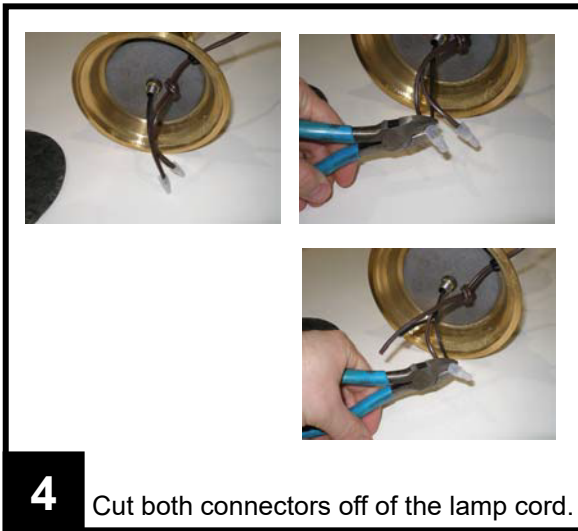


3

Carefully remove the felt covering from the bottom of lamp base. Do not damage this cover as it will be reapplied later.

Microsun[®]

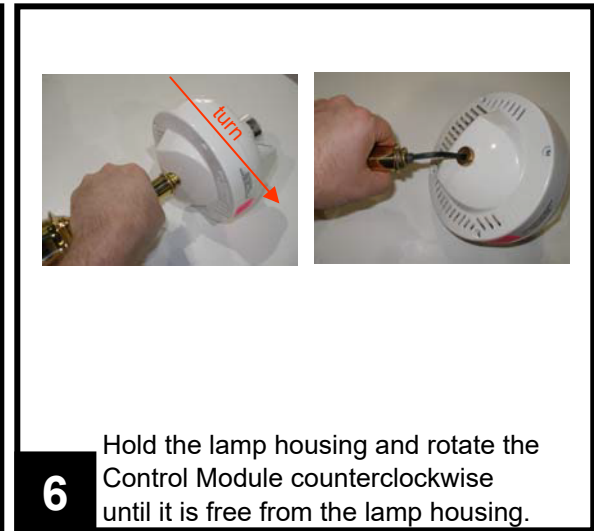
Control Module Assembly Instructions



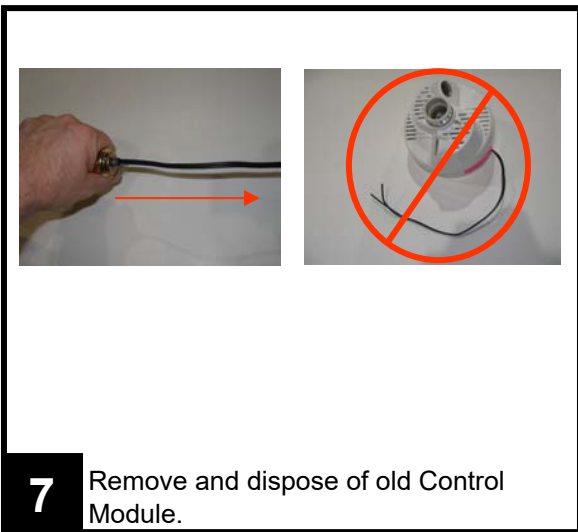
4 Cut both connectors off of the lamp cord.



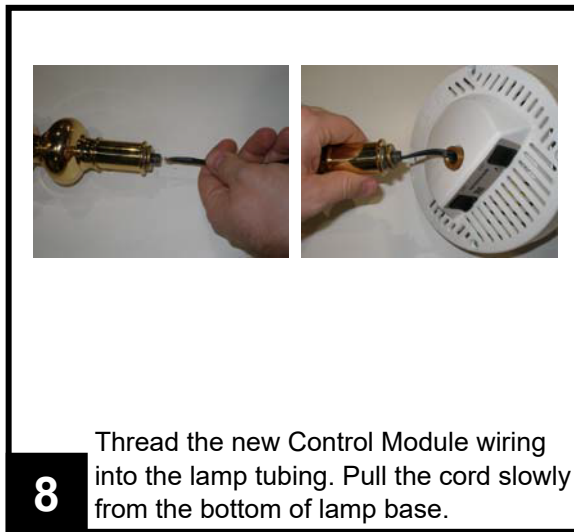
5 Use the 5/64 Allen wrench to remove the set screw found just below the Control Module. Only use the new set screw included with new Control Module when reinstalling.



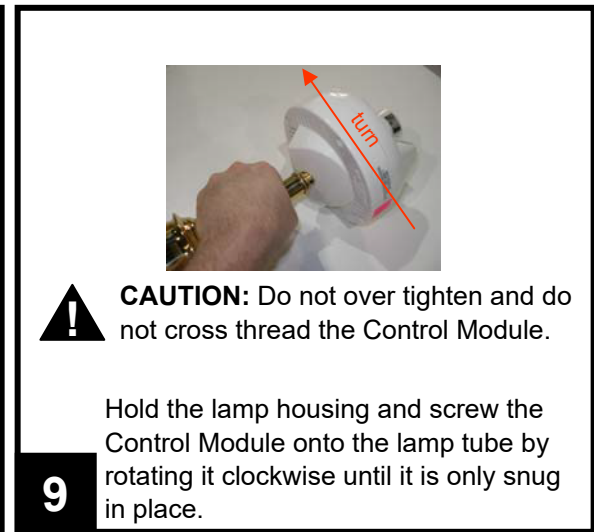
6 Hold the lamp housing and rotate the Control Module counterclockwise until it is free from the lamp housing.



7 Remove and dispose of old Control Module.



8 Thread the new Control Module wiring into the lamp tubing. Pull the cord slowly from the bottom of lamp base.



! **CAUTION:** Do not over tighten and do not cross thread the Control Module.

9 Hold the lamp housing and screw the Control Module onto the lamp tube by rotating it clockwise until it is only snug in place.

Microsun[®]

Control Module Assembly Instructions



Cord

Set Screw

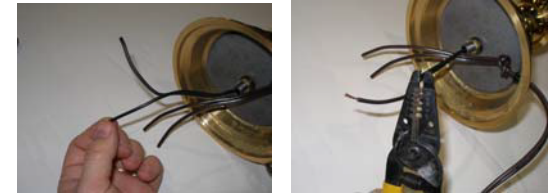
10

The set screw hole should be aligned as close as possible with the cord, then tighten the new included set screw firmly.



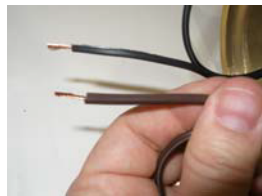
11

Cut the Control Module wire such that 3 inches of wire remain exposed below the lamp's rod.



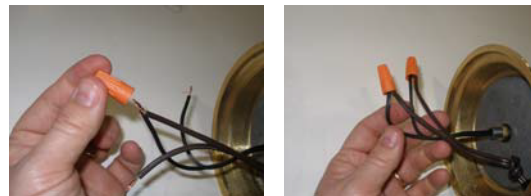
12

Slit Control Module cord in two and wire strip both ends to ½ inch, also strip both ends of the cord to around ½ inch long strips.



13

Locate one wire from the Control Module and one wire from the cord with a ridge or series of ridges on the insulation.



WARNING: Wire nut needs to cover all exposed wires

14

Wire nut these two wires with ridges together. Then wire nut the other two non ridged wires together.



15

Insert wires into base and reattach the bottom felt covering.

Please Note: Torchiere installations require both power switches to be set to the "ON" position prior to assembly.