



MICROSUN Lÿte

Build Your Own Kit

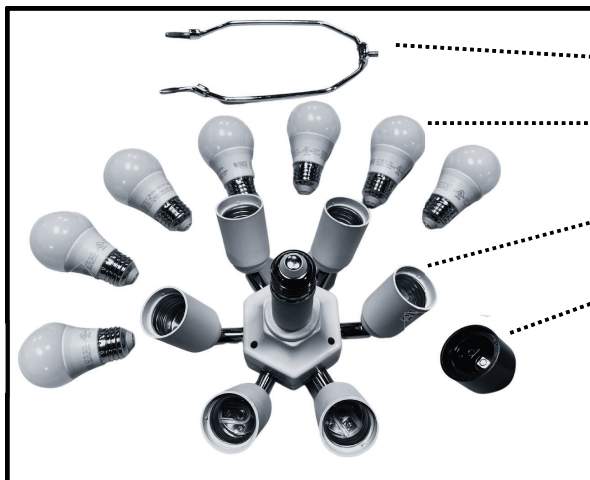
User Guide / Instruction Manual

888-328-8701 • MICROSUN.COM

7890 CENTER POINT 70 BLVD • DAYTON, OH 45424



The Build Your Own MicrosunLÿte Kit Includes:



- 1 Harp
- 7 MicrosunLÿte LED Bulbs
- 1 MicrosunLÿte Module
- 1 Stable Socket

Plus one of the following Power Supplies:

Smart App and Plug



White Corded Slide



Black Corded Slide



For more information and video instructions, please visit the

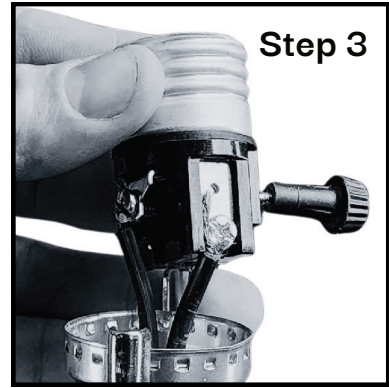
MicrosunLÿte Resource Center

microsunlamps.com/microsunlyte-resource-center



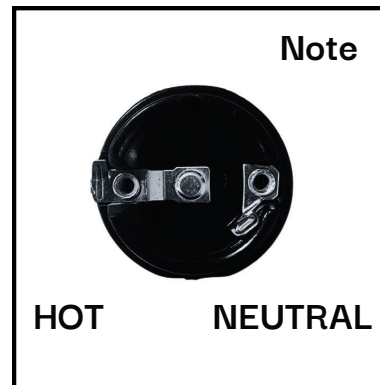
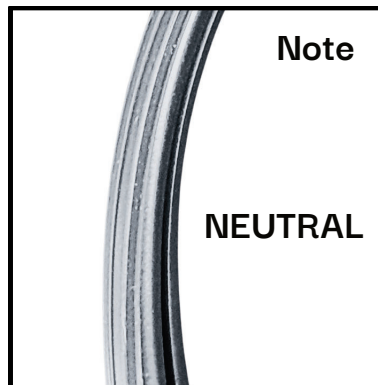
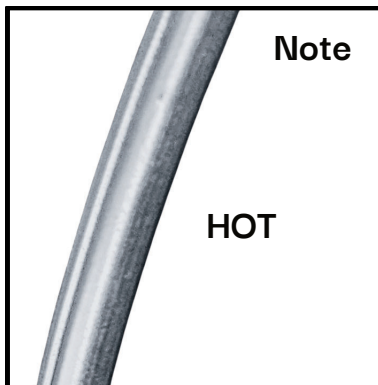
To speak with a technician call **888-328-8701** and choose **option 4**

- 1- **UNPLUG YOUR LAMP!**
- 2- Remove shade, harp and bulb
- 3- Remove outer sleeve of socket



- 4- Unscrew and remove "hot" lead from gold screw terminal
- 5- Unscrew and remove "neutral" lead from silver screw terminal

NOTE: Terminals are not labeled. The hot terminal (smooth) engages the center of the bulb, and the neutral terminal (grooved) engages the side of the bulb.



- 6- Unscrew socket base from lamp and remove



- 7- Install stable socket base over wires and screw onto threaded metal rod
- 8- Ensure exposed copper strands are wrapped tightly and not exceeding 1/4" or 6.35 mm
- 9- Insert exposed copper portion of the "neutral" wire into the "neutral" terminal of the socket insert and tighten screw
- 10- Insert exposed copper portion of "hot" wire into "hot" terminal of the socket insert and tighten screw
- 11- Pull excess wire back down to the base of the lamp until the socket insert is firmly seated in the socket base



Step 7



Steps 8-11



Steps 8-11



Steps 8-11

- 12- Screw on outer socket until snug
- 13- Screw in MicrosunLyte module
- 14- Screw in MicrosunLyte bulbs



Step 12



Step 12



Step 13



Step 14

- 15- Install Harp and Shade
- 16- Plug the Smart Plug or Corded Slide Plug into an outlet and plug the lamp into the Smart Plug or Corded Slide Plug
- 17- **Enjoy the Light!**