

Easily control your light
with your cell phone



MicrosunLýte

How to set up your Starfish App

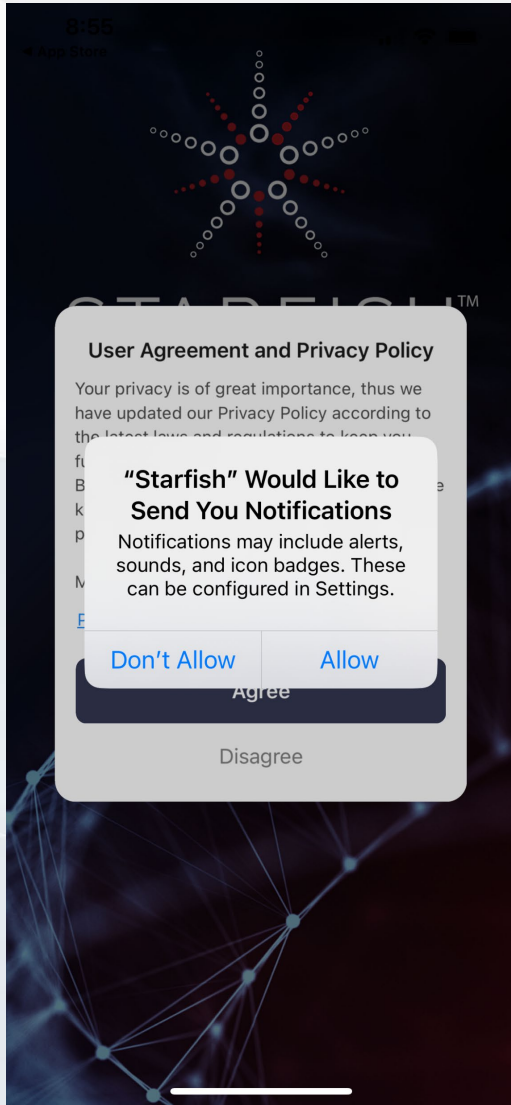
In order for you to control your MicrosunL̄yte lamp with your phone, you will need:

- A cell phone or other smart device
- WiFi network
- The password for your WiFi network
- The Smart Plug Outlet included with your lamp
- The Starfish App downloaded to your device

Go to the Apple Store (iPhone) or the Google Play Store (Android) to find and download the app called "Starfish Smart Lighting"

Image of the App to download

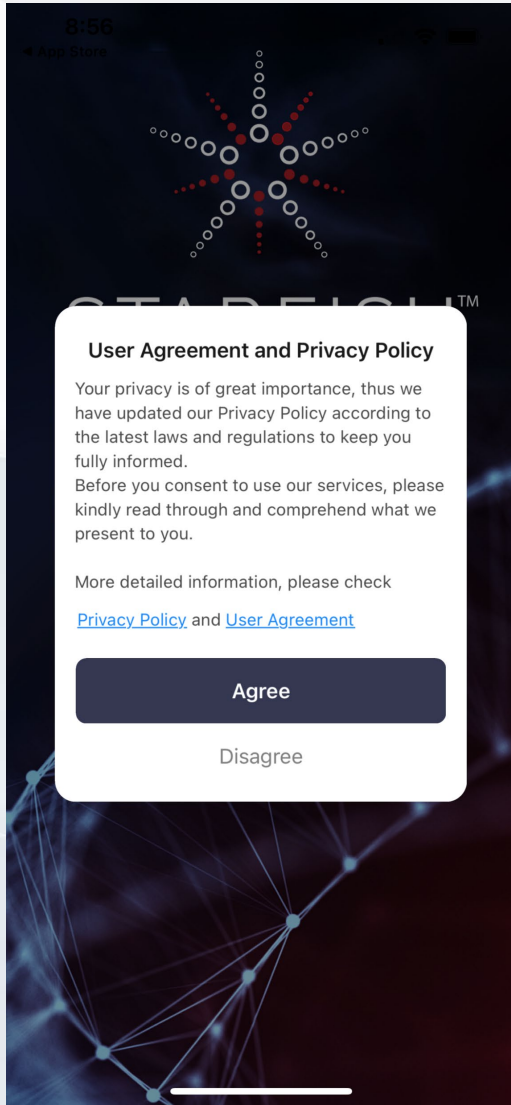




Step 1:

Choose **ALLOW**

This enables the app to send alerts to your phone



Step 2:

Choose AGREE

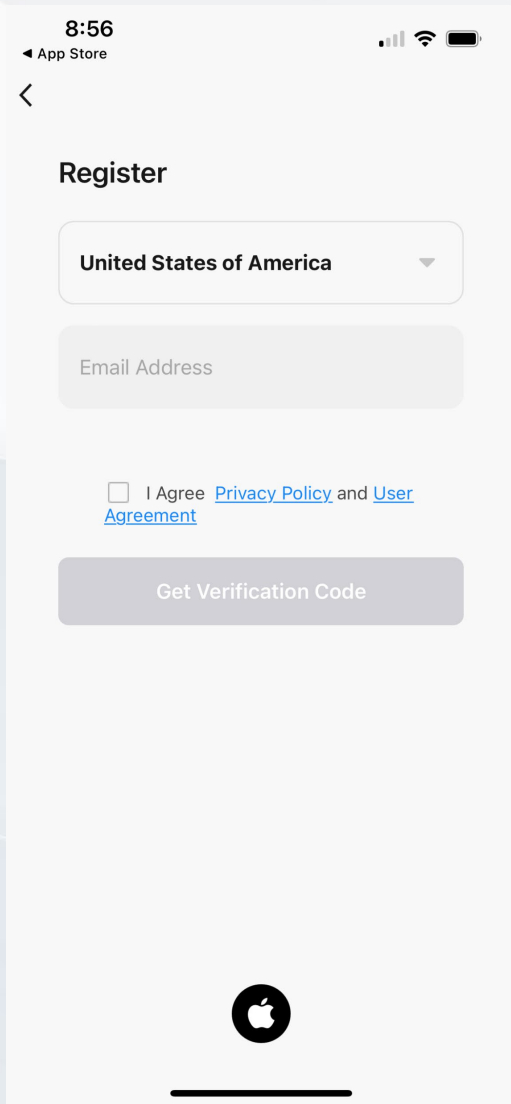
Agree to the user agreement and privacy policy



Step 3:

Choose SIGN UP

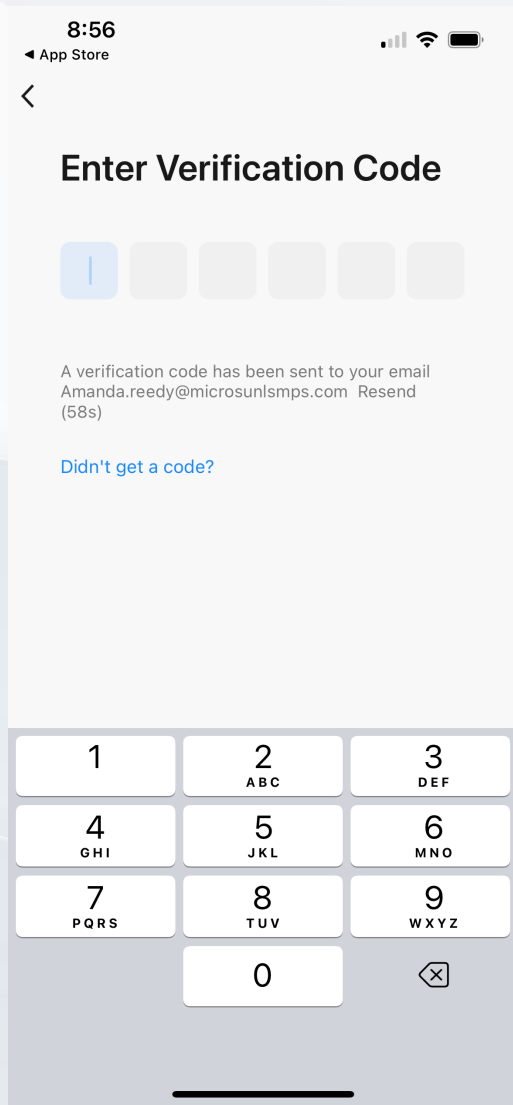
This will allow you to set up your Starfish account



Step 4:

- Type your EMAIL ADDRESS
- Check the box next to I AGREE
- Click to GET VERIFICATION CODE

This will send a code to your email

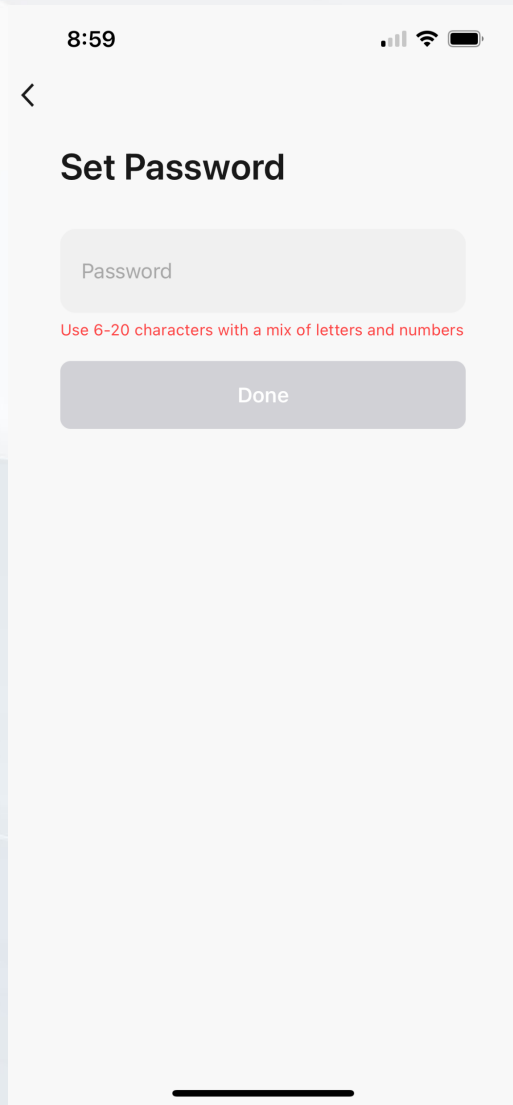


Step 5:

Go to your email to get the VERIFICATION CODE

Enter VERIFICATION CODE

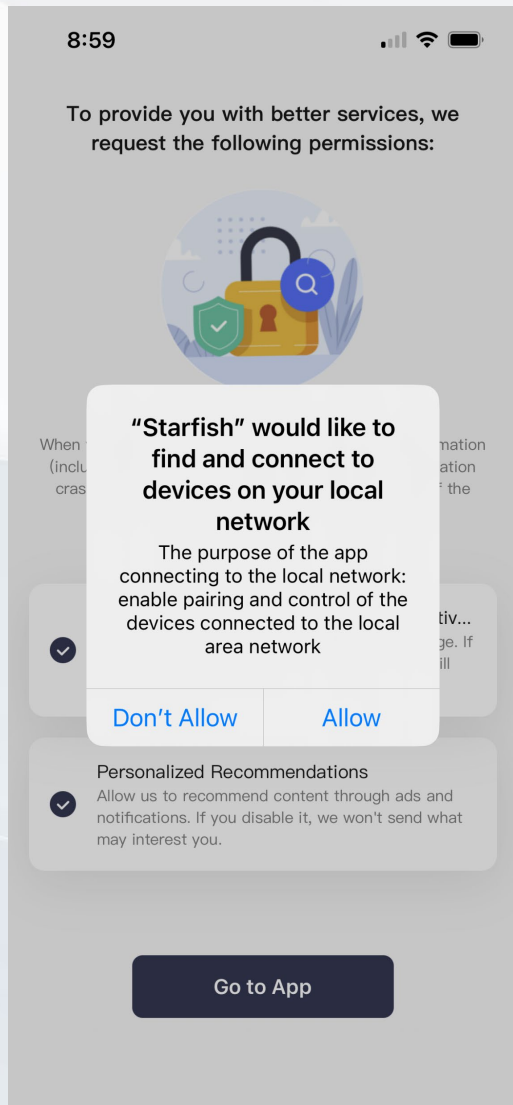
This will verify your email for your Starfish account



Step 6:

Set your PASSWORD

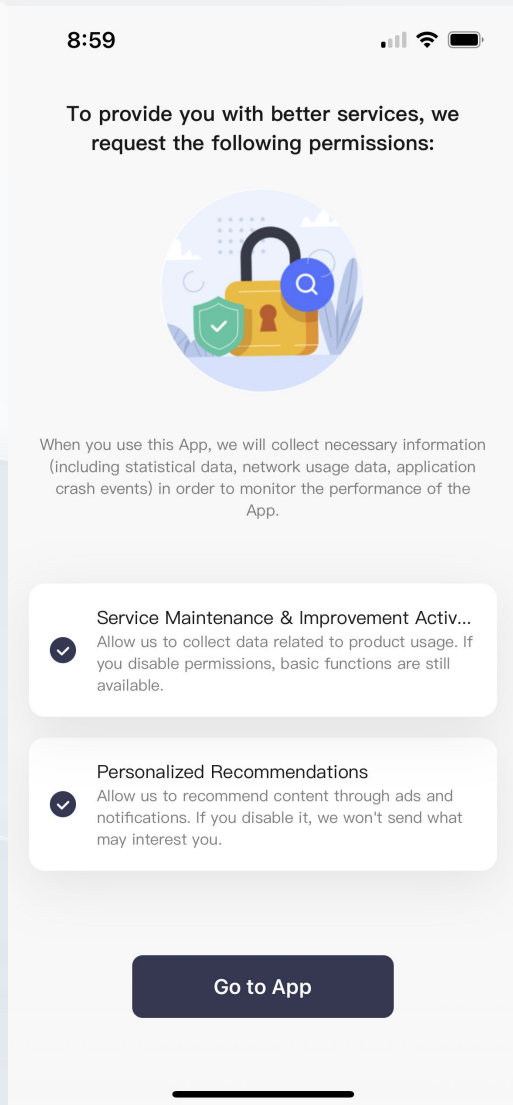
Your password must be 6-20 characters with a mix of letters and numbers



Step 7:

Choose ALLOW

The app will now be able to connect to your home WiFi network

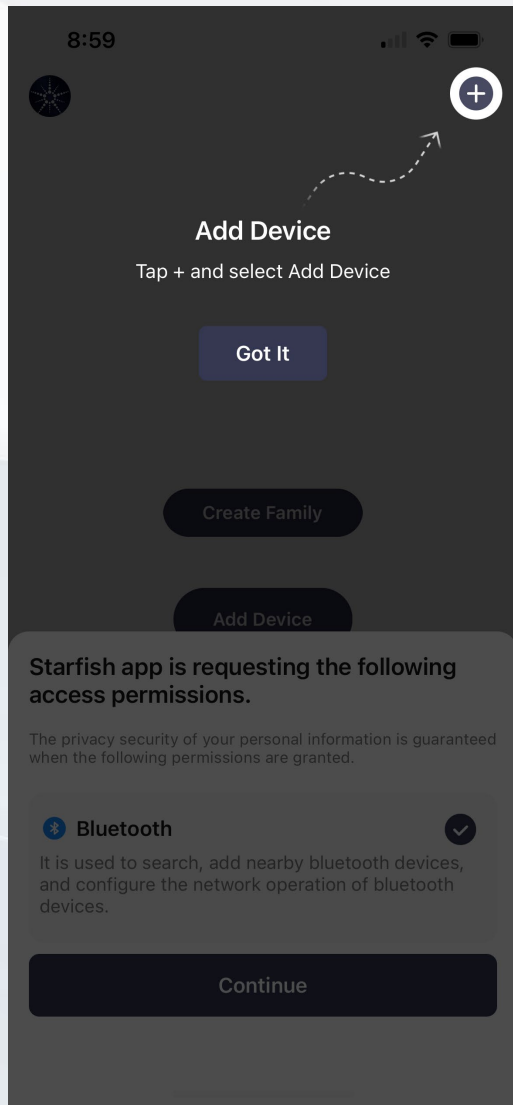


Step 8:

Choose whether you want to allow these permissions.

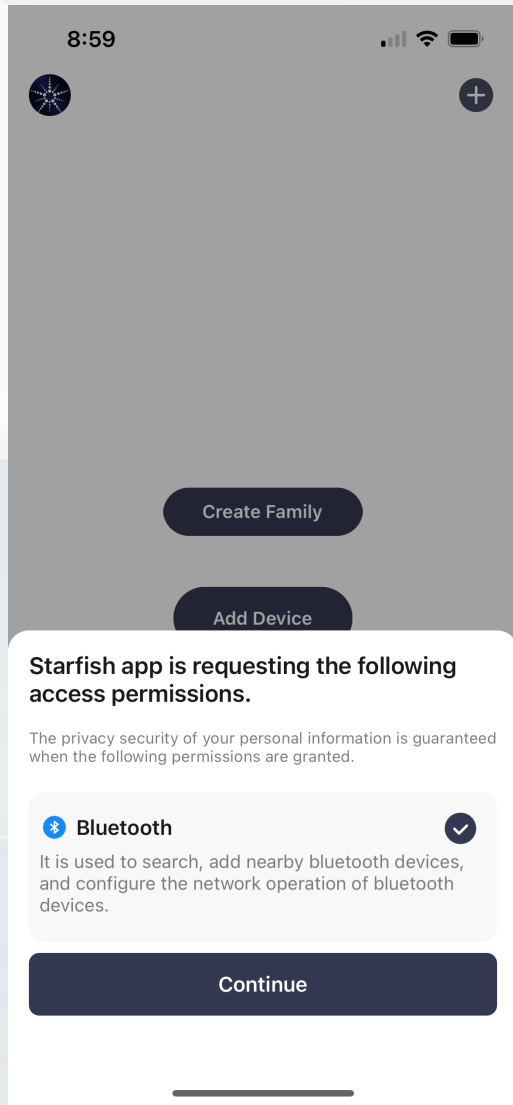
Click GO TO APP

You can choose not to allow these permissions and still be able to utilize the Starfish app



Step 9:

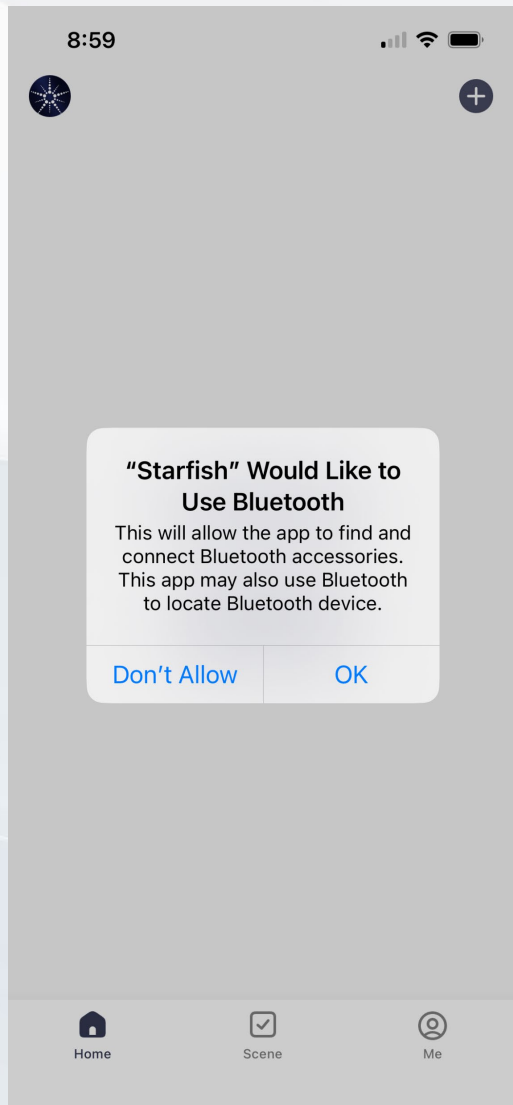
Click the GOT IT button to ADD
DEVICE



Step 10:

Click CONTINUE to allow Starfish to have access to your WiFi

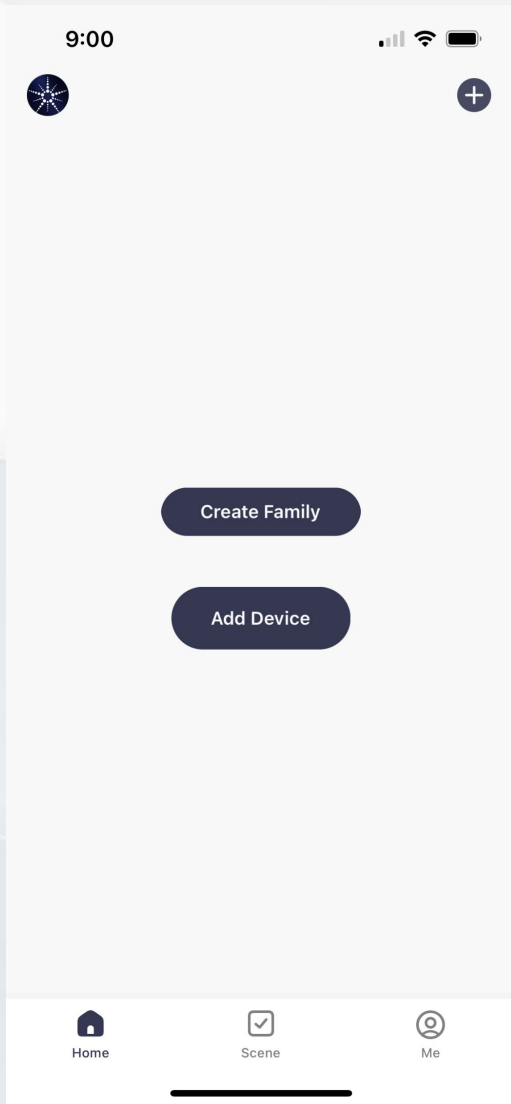
You will need to choose to allow these permissions in order for the Starfish App to work



Step 11:

Click OK to allow Starfish to use your Bluetooth device

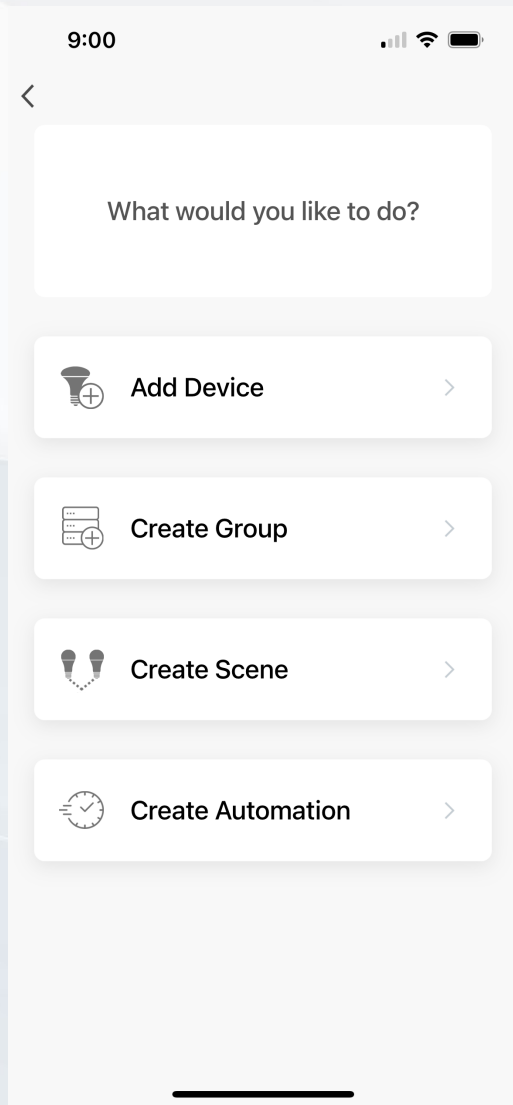
You will need to choose to allow this permission in order for the Starfish App to work



Step 12:

Choose ADD DEVICE

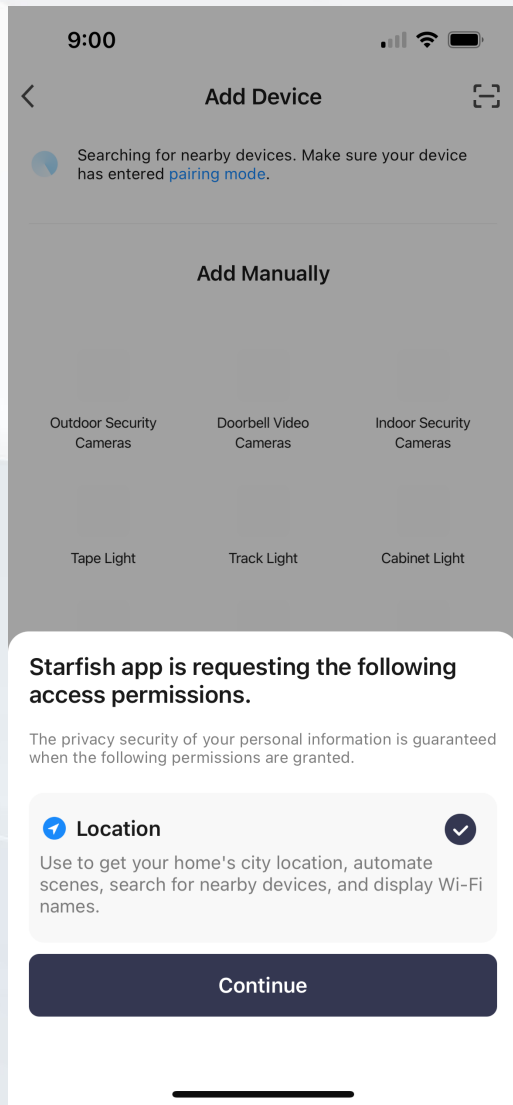
You can adjust options after finalizing app setup



Step 13:

Choose ADD DEVICE

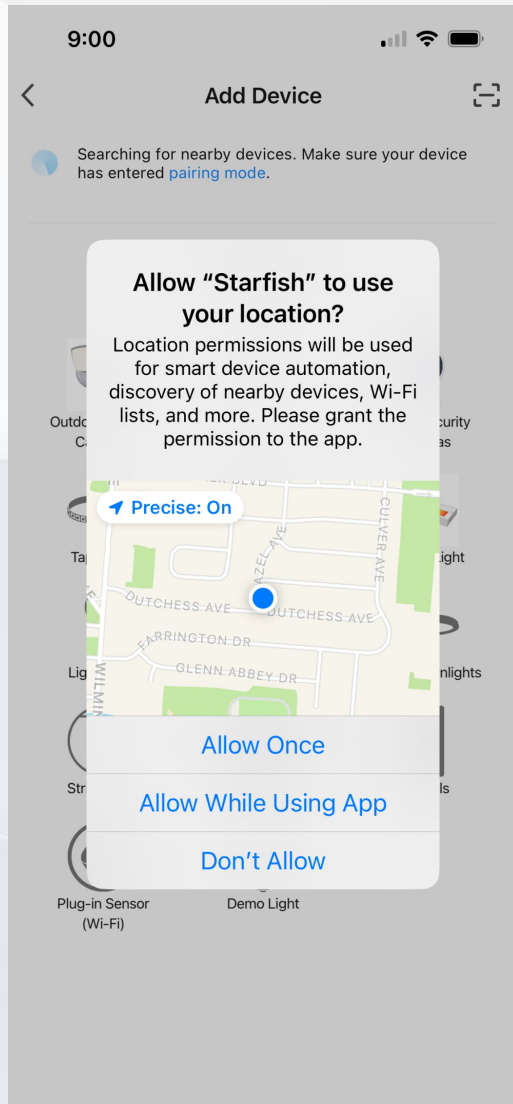
You can adjust other options after finalizing app setup



Step 14:

Choose CONTINUE

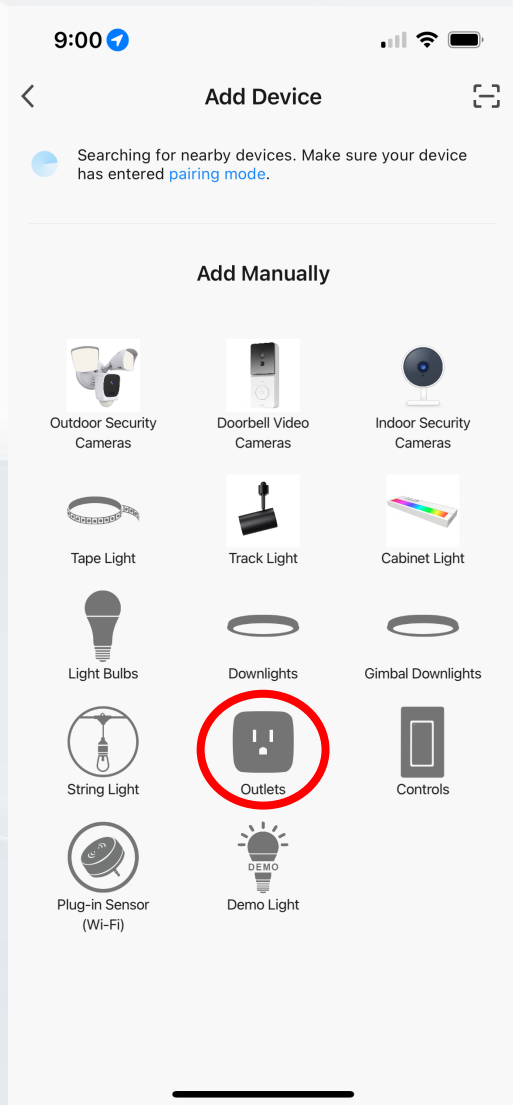
You will need to allow these permissions



Step 15:

Choose ALLOW WHILE USING APP

You must allow Starfish to use your location either *once* or *while using the app*. If you choose *once*, you will have to allow each time you use the app.

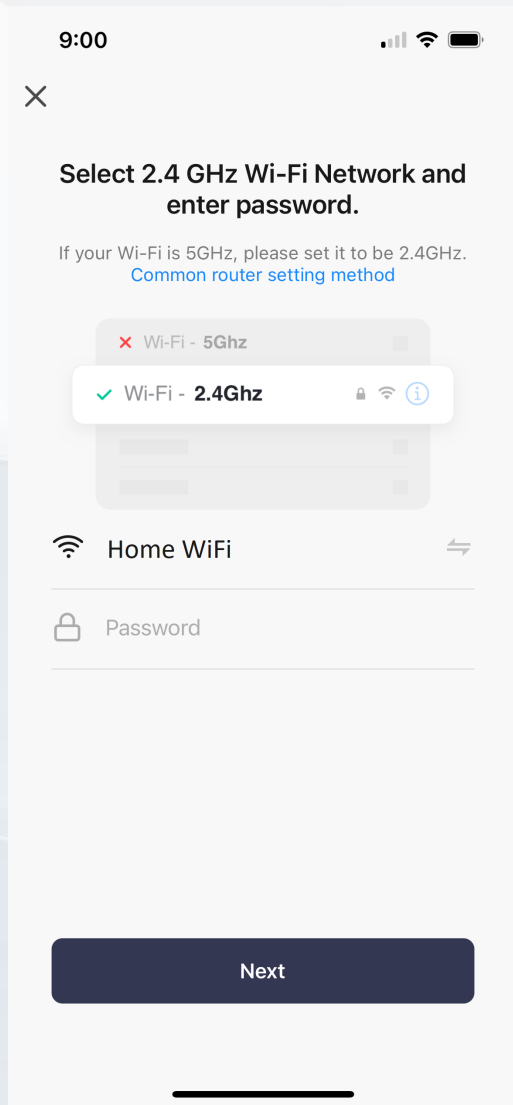


Step 16:

Choose OUTLETS

Your device will need to be in pairing mode for setup

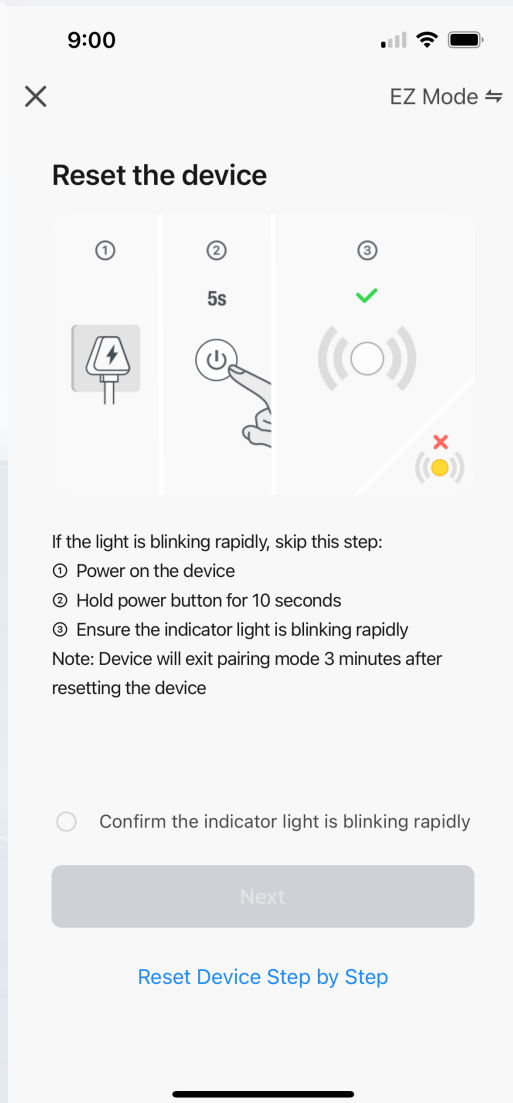
If your device is not in pairing mode, turn on Bluetooth to search for available devices



Step 17:

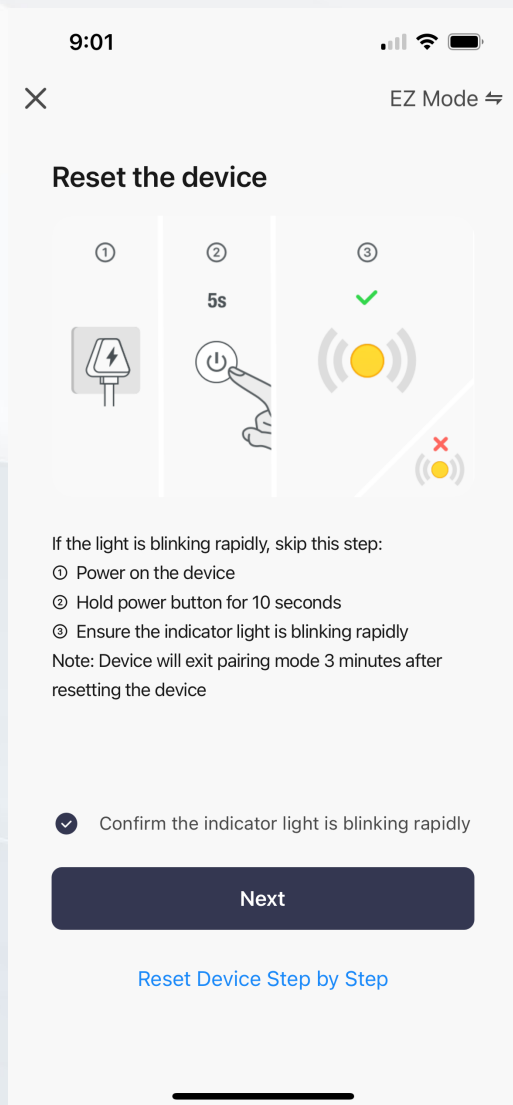
- Choose YOUR WIFI NETWORK
- Enter PASSWORD for your WiFi

Click NEXT to connect the app to your WiFi network



Step 18:

- Plug in the Starfish Outlet
- POWER ON the Starfish Outlet
- Check to see if the light is blinking rapidly
- If it is not blinking rapidly, HOLD the power button down for 10 seconds

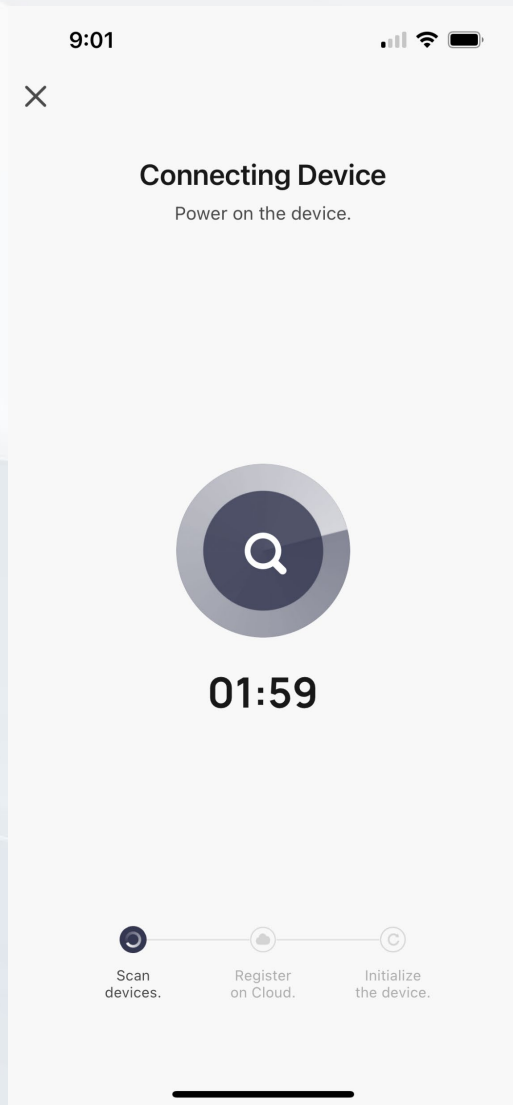


Step 19:

- Click to Confirm that the indicator light is **BLINKING RAPIDLY**

Click NEXT

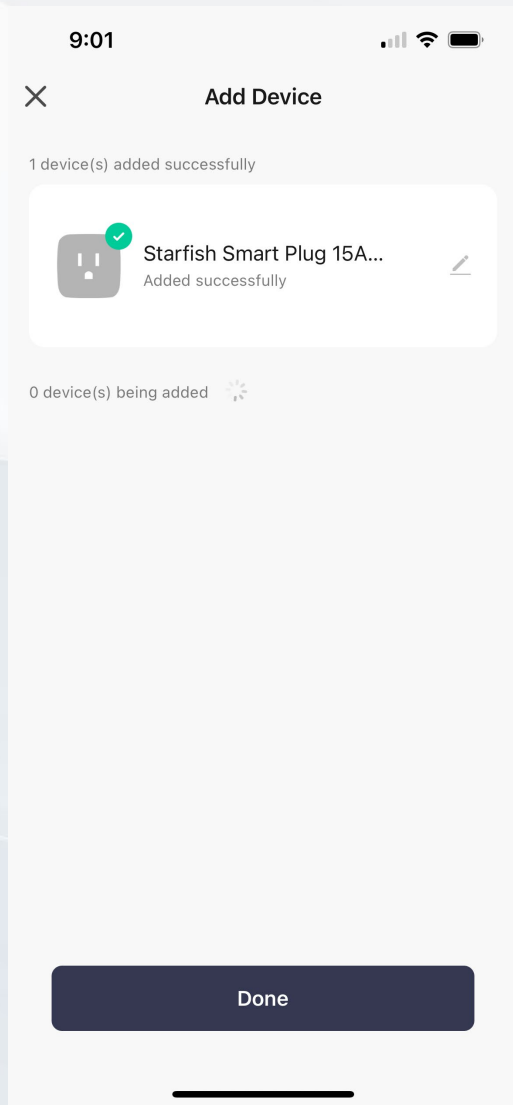
Note that the outlet will remain in pairing mode for 2 minutes even if the light stops blinking



Step 20:

Wait while the app scans for the outlet

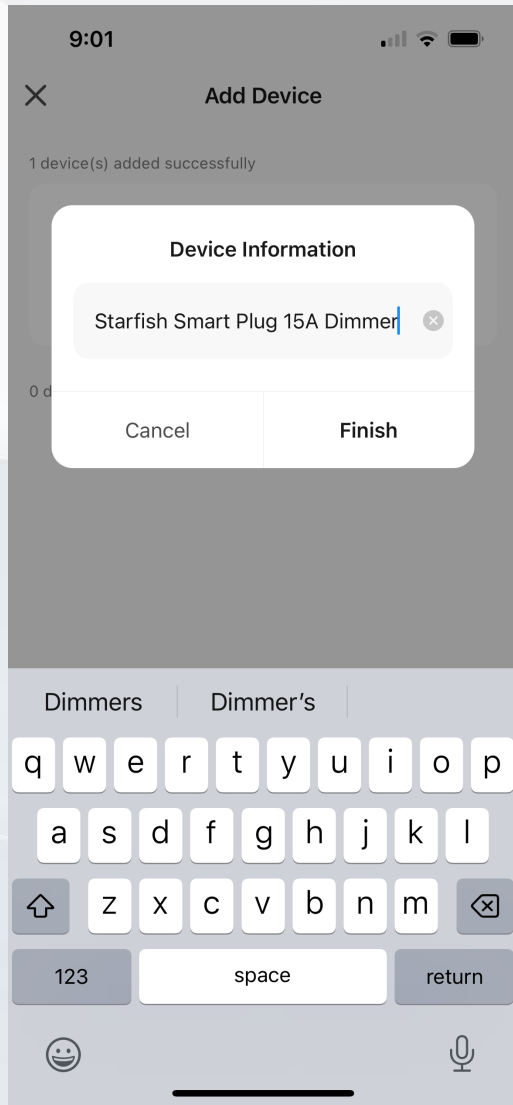
- The outlet will remain in pairing mode for 2 minutes even if the light stops blinking.
- DO NOT PRESS the power button until the pairing has completed or the 2-Minute timer runs out



Step 21:

Starfish Smart Plug Successfully Added

Click DONE

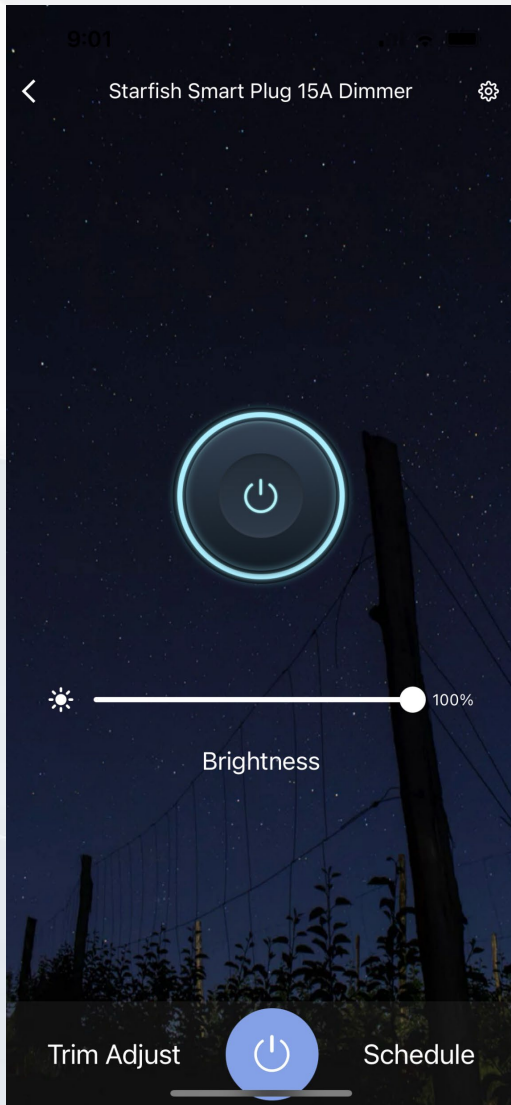


Step 22:

Choose a name for your Starfish Smart Plug

Example: Living Room Lamp, Bedroom Lamp, etc.

Click FINISH



Step 23:

You will now be able to control your MicrosunL̄yte with your app

- Power on and off
- Adjust brightness
- Schedule light timer