



MICROSUN Lyte

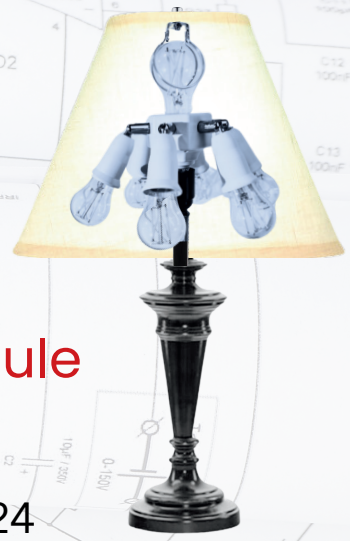
Build Your Own Kit

User Guide / Instruction Manual

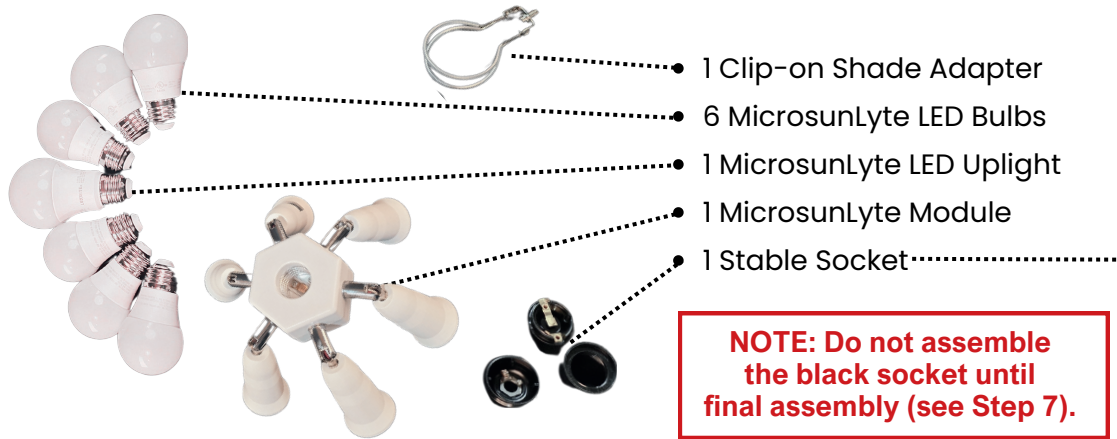
Converting from Microsun Control Module

888-328-8701 • MICROSUN.COM

7890 CENTER POINT 70 BLVD • DAYTON, OH 45424



The Build Your Own MicrosunLyte Kit Includes:



NOTE: Do not assemble the black socket until final assembly (see Step 7).



Plus one of the following Dimming Power Supplies:

Smart App and Plug



White Corded Slide



Black Corded Slide



NOTE: The MicrosunLyte Module can screw directly into the socket of your lamp. **It is not required to change out the socket.** However, if your socket is loose and/or unstable, we recommend you follow these instructions to install the stable socket on your lamp.

If you choose not to change the socket, please skip to Step 13.

For more information and instructions, please visit the

MicrosunLyte Resource Center

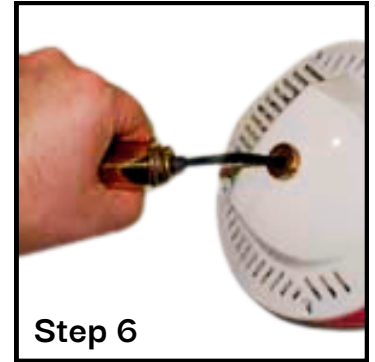
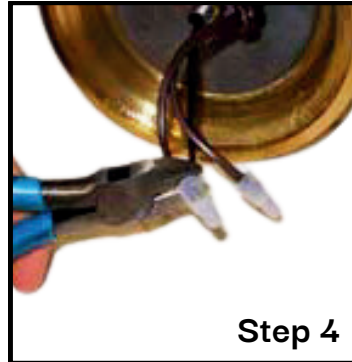
microsunlamps.com/microsunlyte-resource-center



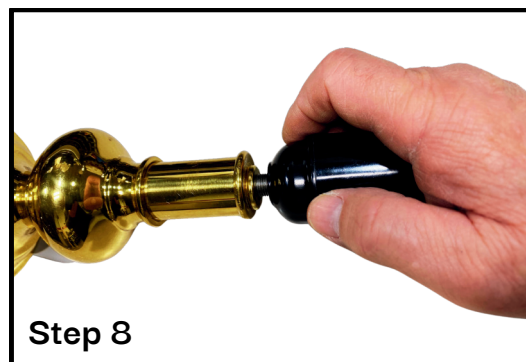
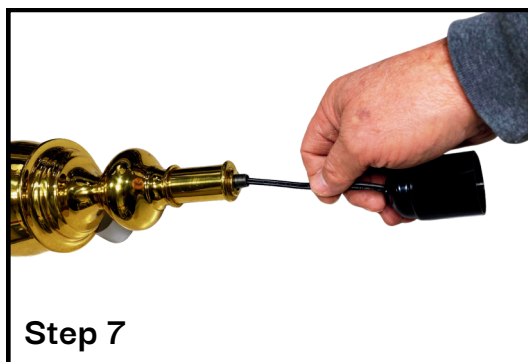
To speak with a technician call **888-328-8701** and choose **option 4**

1- **UNPLUG YOUR LAMP!**

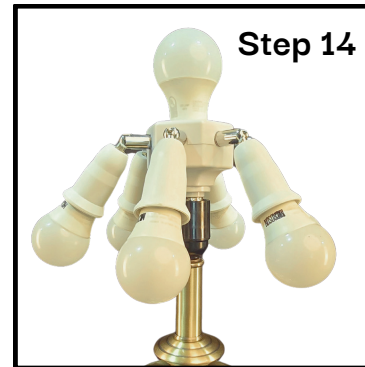
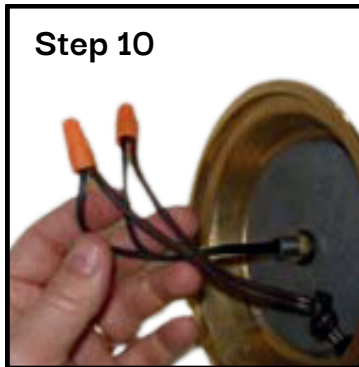
- 2- Lay the lamp on its side with the switches facing down.
- 3- Remove or cut an X in the center of the felt in the bottom of the lamp.
- 4- Under the felt, you will find two wire connectors. If there are wire nuts, twist them counterclockwise and remove them. If the connections are crimps, you will need to use wire cutters. Cut them off as close as possible to the connectors.
- 5- On the bottom of the Control Module you will see a small brass piece with a set screw. Use a 5/64" Allen wrench to remove set screw.
- 6- Remove the Control Module by turning it counterclockwise and pull it from the lamp. The wire will come out with the Control Module.



- 7- You are now ready to install the Stable Socket. Feed the end of the wire down the lamp rod until the Stable Socket is flush with the lamp rod.
- 8- Screw the Stable Socket onto the lamp rod by turning it clockwise and tighten "hand tight". **DO NOT OVERTIGHTEN.**
- 9- Cut the excess wire from the Stable Socket, leaving approximately 3" to 4" of wire.



- 10- Strip the four wires back approximately 1/2". Locate the two grooved wires and twist them together and screw one of the wire nuts onto the wires. Repeat the process with the smooth wires.
- 11- Replace the felt.



- 12- Remove the protective cap and screw the MicrosunLyte module into your lamp.
- 13- Screw in MicrosunLyte bulbs
- 14- Install Clip-on Shade Adapter, Shade and Finial
- 15- Plug the Smart Plug or Corded Slide Dimmer into an outlet and plug the lamp into the Smart Plug or Corded Slide Dimmer outlet.
- 16- Enjoy the Light!**