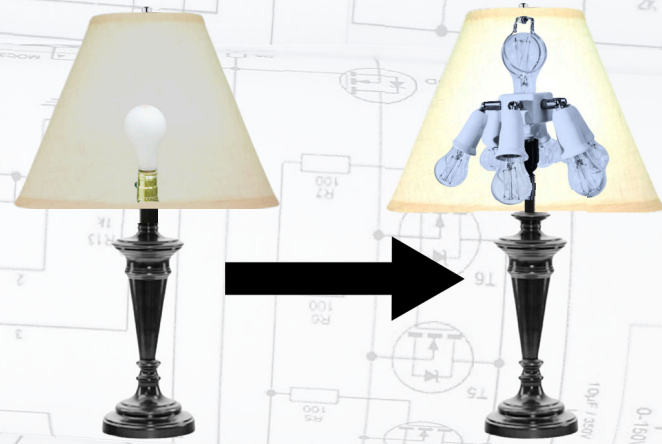




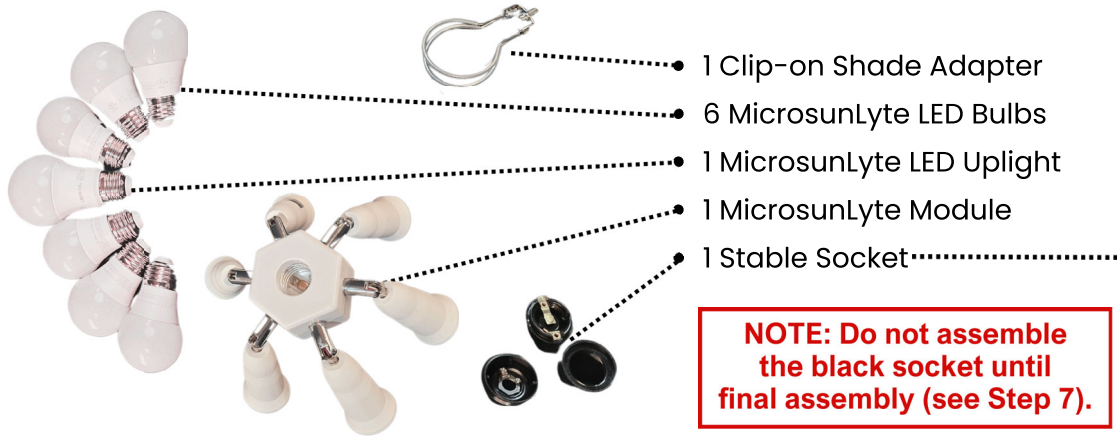
MICROSUN Lyte

Build Your Own Kit

How to transform your lamp to a MicrosunLyte with the Build Your Own Kit



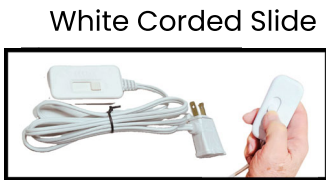
The Build Your Own MicrosunLyte Kit Includes:



NOTE: Do not assemble the black socket until final assembly (see Step 7).



Plus one of the following Dimming Power Supplies:



NOTE: The MicrosunLyte Module can screw directly into the socket of your lamp. **It is not required to change out the socket.** However, if your socket is loose and/or unstable, we recommend you follow these instructions to install the stable socket on your lamp.

If you choose not to change the socket, please skip to Step 13.

For more information and instructions, please visit the

MicrosunLyte Resource Center

microsunlamps.com/microsunlyte-resource-center

To speak with a technician call **888-328-8701** and choose **option 4**

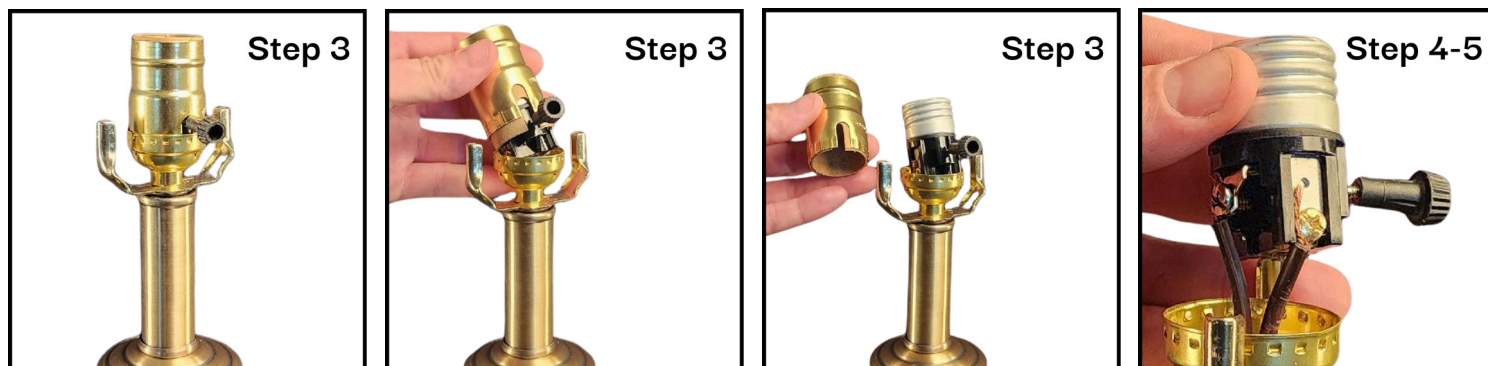


1- **UNPLUG YOUR LAMP!**

2- Remove finial, shade, harp and bulb.

3- Remove outer sleeve of socket. Press at the spot where "press" is imprinted on the socket to remove.

4- Loosen screws holding wires and remove socket from lamp.



5- Loosen set screw and twist counterclockwise to remove socket base from lamp. *If your lamp does not have a set screw, it could have adhesive on the threads which may require a heat gun to loosen.*

6- Remove and unscrew socket base from lamp and remove. Remove and discard the Harp Saddle.

7- Install stable socket base over wires and screw onto threaded metal rod



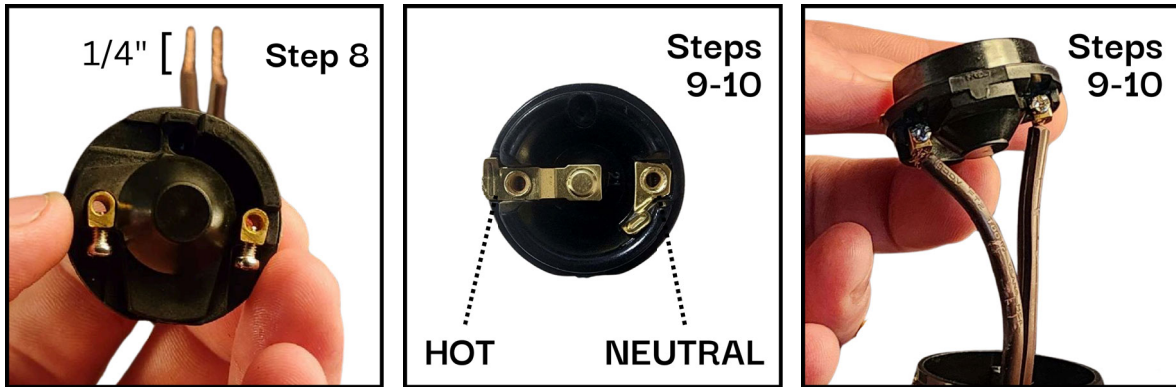
NOTE: Terminals are not labeled.

The insulation on each wire is different. One is smooth and one is grooved. The smooth wire is HOT and the grooved wire is NEUTRAL.

The hot terminal (smooth) engages the center of the bulb, and the neutral terminal (grooved) engages the side of the bulb.

**SEE PICTURES ON NEXT PAGE*

- 8- Ensure exposed copper strands are twisted tightly and not exceeding 1/4" or 6.35 mm'.
- 9- Insert exposed copper portion of the neutral wire (grooved) into the neutral terminal of the socket and tighten screw.
- 10- Insert exposed copper portion of the hot wire (smooth) into the hot terminal of the socket and tighten screw.



- 11- Push the socket insert down until it is firmly seated in the socket base.
- 12- Screw on outer socket cover until snug. *Do not overtighten.*



- 13- Remove the protective cap and screw the MicrosunLyte module into your lamp.
- 14- Screw in MicrosunLyte bulbs
- 15- Install Clip-on Shade Adapter, Shade and Finial
- 16- Plug the Smart Plug or Corded Slide Dimmer into an outlet and plug the lamp into the Smart Plug or Corded Slide Dimmer outlet.
- 17- Enjoy the Light!**