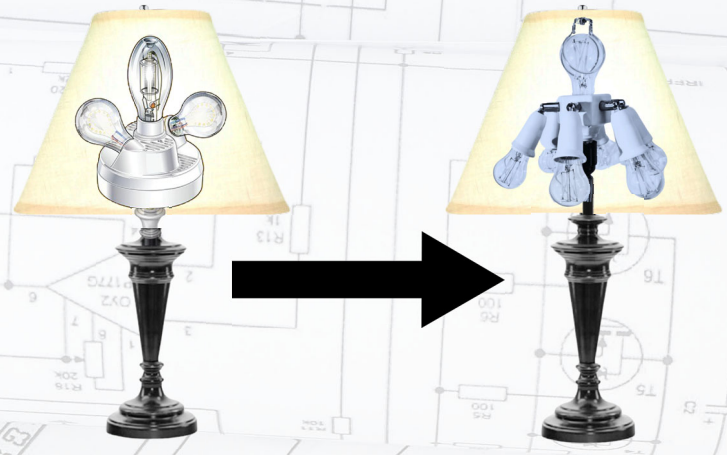


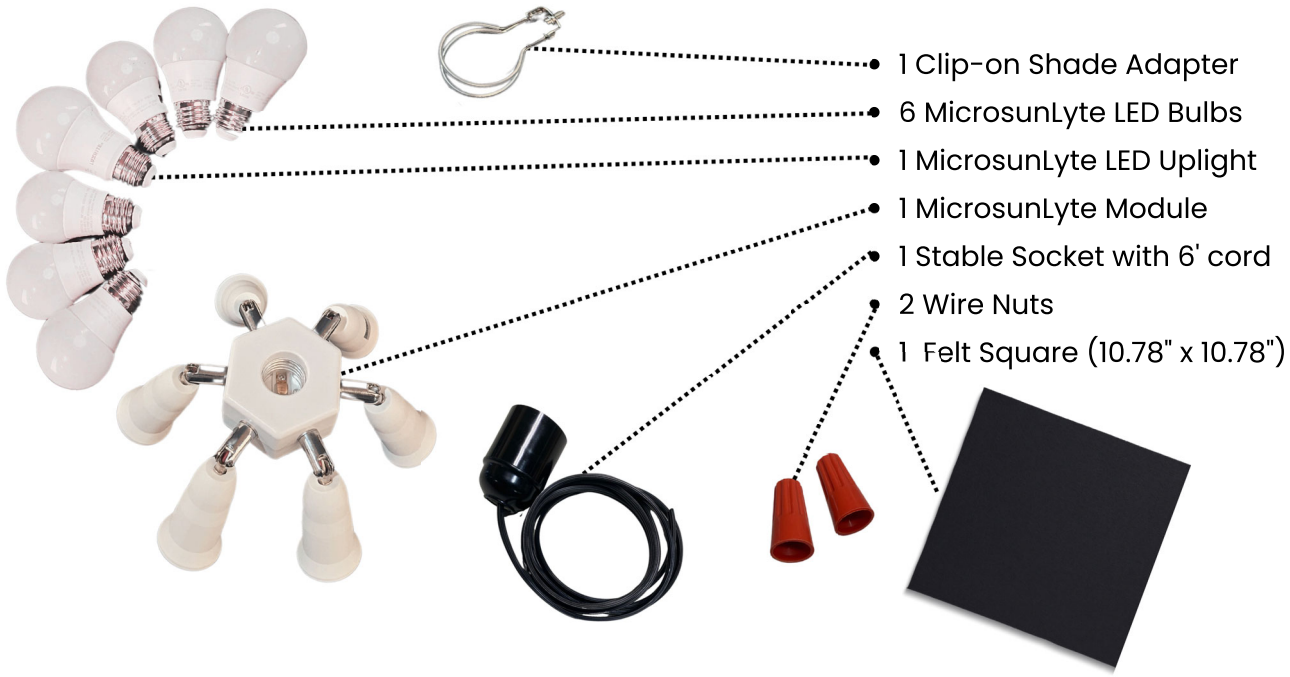


# MICROSUN Lyte Conversion Kit

## How to Replace your Microsun Control Module with a MicrosunLyte Kit.



The MicrosunLyte Conversion Kit includes:



- 1 Clip-on Shade Adapter
- 6 MicrosunLyte LED Bulbs
- 1 MicrosunLyte LED Uplight
- 1 MicrosunLyte Module
- 1 Stable Socket with 6' cord
- 2 Wire Nuts
- 1 Felt Square (10.78" x 10.78")

Plus one of the following Dimming Power Supplies:

Smart App and Plug



White Corded Slide



Black Corded Slide



For more information and instructions, please visit the

## MicrosunLyte Resource Center

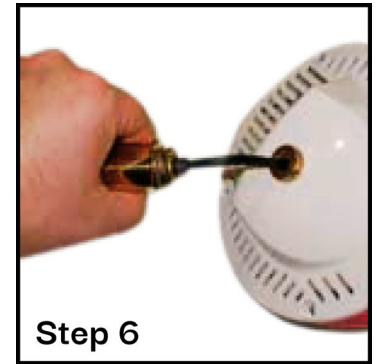
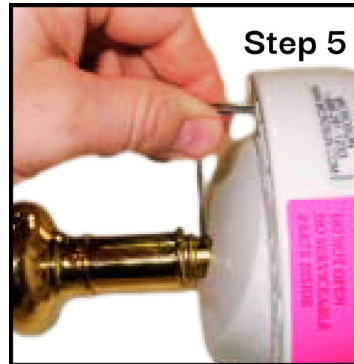
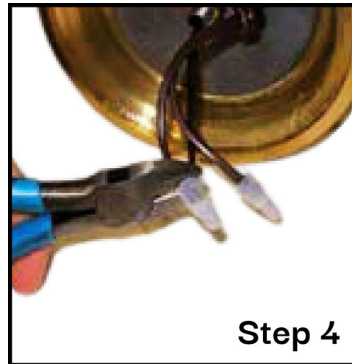
[microsunlamps.com/microsunlyte-resource-center](http://microsunlamps.com/microsunlyte-resource-center)

To speak with a technician call **888-328-8701** and choose **option 4**

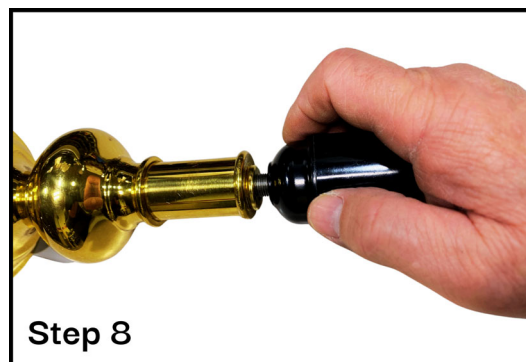
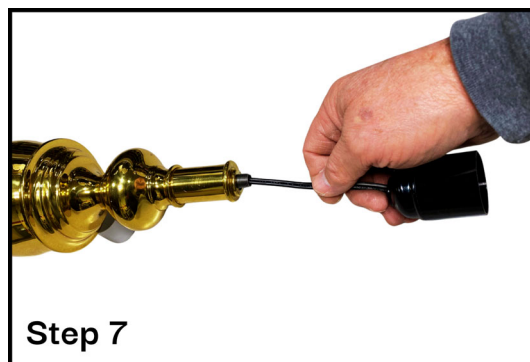


1- **UNPLUG YOUR LAMP!**

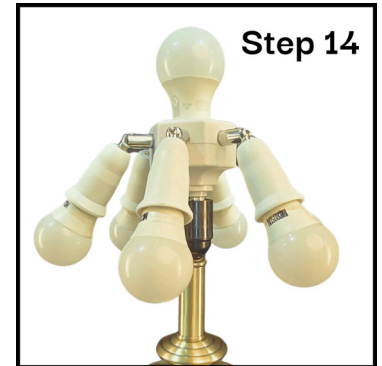
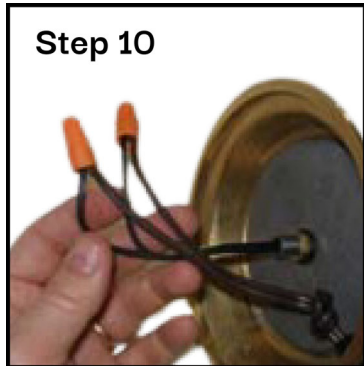
- 2- Lay the lamp on its side with the switches facing down.
- 3- Remove or cut an X in the center of the felt in the bottom of the lamp.
- 4- Under the felt, you will find two wire connectors. If there are wire nuts, twist them counterclockwise and remove them. If the connections are crimps, use wire cutters to cut them off as close as possible to the crimps.
- 5- On the bottom of the Control Module you will see a small brass piece with a set screw. Use a 5/64" Allen wrench to remove set screw.
- 6- Remove the Control Module by turning it counterclockwise and pull it from the lamp. The wire will come out with the Control Module.



- 7- You are now ready to install the Stable Socket. Feed the end of the wire down the lamp rod until the Stable Socket is flush with the lamp rod.
- 8- Screw the Stable Socket onto the lamp rod by turning it clockwise and tighten "hand tight". **DO NOT OVERTIGHTEN.**
- 9- Cut the excess wire from the Stable Socket, leaving approximately 3" to 4" of wire at the base of the lamp.



- 10- Strip the four wires back approximately 1/2". Locate the two grooved wires and twist them together and screw one of the wire nuts onto the wires. Repeat the process with the smooth wires.
- 11- Replace the felt.



- 12- Remove the protective cap and screw the MicrosunLyte module into your lamp.
- 13- Screw in MicrosunLyte bulbs
- 14- Install Clip-on Shade Adapter, Shade and Finial
- 15- Plug the Smart Plug or Corded Slide Dimmer into an outlet and plug the lamp into the Smart Plug or Corded Slide Dimmer outlet.
- 16- Enjoy the Light!**